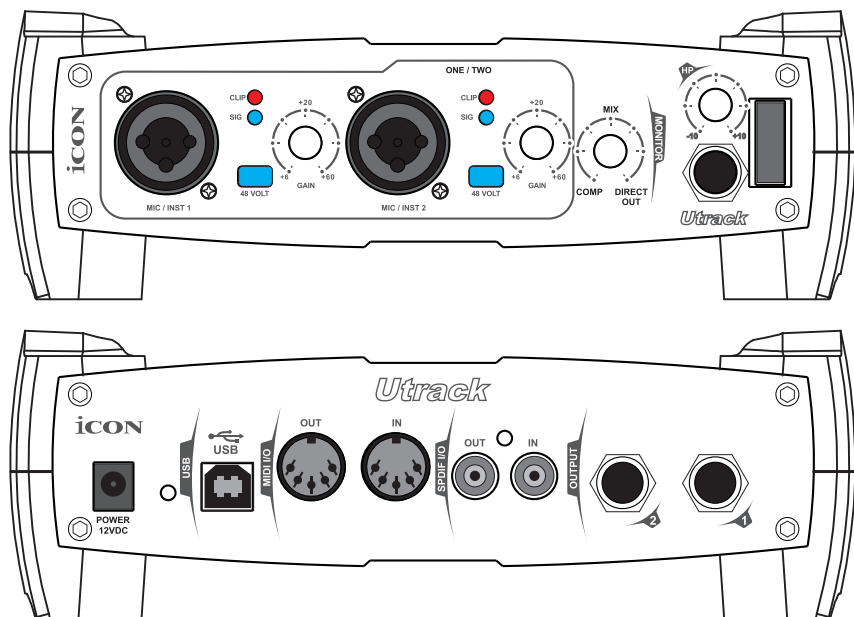






# Utrack

2-In / 2-Out Recording USB Interface  
with MIDI & S/PDIF I/O



|   |   |
|---|---|
| <div style="display: flex; justify-content: space-between; align-items: center;">  <div style="text-align: center;"> <p><b>CAUTION</b></p> <p>RISK OF ELECTRIC SHOCK<br/>DO NOT OPEN<br/>RISQUE DE CHOC ELECTRIQUE<br/>NE PAS OUVRIR</p> <p>CAUTION: TO REDUCE THE RISK OF ELECTRIC SHOCK<br/>DO NOT REMOVE COVER (OR BACK)<br/>NO USER-SERVICEABLE PARTS INSIDE<br/>REFER SERVICING TO QUALIFIED PERSONNEL</p> <p>ATTENTION: POUR EVITER LES RISQUES DE CHOC<br/>ELECTRIQUE: NE PAS ENLEVER LE COUVERCLE. AUCUN<br/>ENTRETIEN DE PIECES INTERIEURES PAR L'USAGER. CONFIER<br/>L'ENTRETIEN AU PERSONNEL QUALIFIE.</p> <p>AVIS: POUR EVITER LES RISQUES D'INCENDIE OU<br/>D'ELECTROCUTION, N'EXPOSEZ PAS CET ARTICLE<br/>A LA PLUIE OU A L'HUMIDITE</p> </div>  </div> | <div style="display: flex; flex-direction: column; align-items: center;">   </div> <p>The lightning flash with arrowhead symbol within an equilateral triangle is intended to alert the user to the presence of uninsulated dangerous voltage within the product's enclosure, that may be of sufficient magnitude to electric shock to persons. Le symbol clair avec point de flèche à l'intérieur d'un triangle équilatéral est utilisé pour alerter l'utilisateur de la présence d'intérieur du coffret de voltage dangereux non isolé d'ampleur suffisante.</p> <p>The exclamation point within an equilateral triangle is intended to alert the user of the presence of important operating and maintenance (servicing) instructions in the literature accompanying the appliance. Le point d'exclamation à l'intérieur d'un triangle équilatéral est employé pour alerter les utilisateurs de la présence d'instructions importantes pour le fonctionnement et l'entretien (service) dans le livret d'instruction accompagnant l'appareil.</p> |
|---|---|

## Important Safety Instructions

1. Read all manufacturer's warnings and instructions
2. Do not use this apparatus near water.
3. Clean only with dry cloth.
4. Do not block any ventilation openings and do not install near any heat sources such as radiators, heat registers, stoves, or other apparatus (including amplifiers) that produce heat.
5. Do not defeat the safety function of the polarized or grounding-type plug. A polarized plug has two blades with one wider than the other. A grounding type plug has two blades and a third grounding prong. The wide blade or the third prong is provided for your safety. If the provided plug does not fit into your outlet, consult an electrician for replacement of the obsolete outlet.
6. Protect the power cord from being walked on or pinched particularly at plugs, convenience receptacles, and the point where they exit from the apparatus.
7. Only use attachments/accessories specified by the manufacturer.
8. Unplug this apparatus during lightning storms or when unused for long periods of time.
9. Refer all servicing to qualified service personnel. Servicing is required when the apparatus has been damaged in any way, such as power-supply cord or plug is damaged, liquid has been spilled or objects have fallen into the apparatus, the apparatus has been exposed to rain or moisture, does not operate normally, or has been dropped.

**WARNING:** To reduce the risk of fire or electric shock, do not expose this unit to rain or moisture

**Contents**

Introduction  
What's in the package ..... 1

Features ..... 2

Front Panel Layout ..... 3

Rear Panel Layout ..... 4

Driver Installation ..... 5-7

Control Panel ..... 8-10

Hardware Connections ..... 11-12

Minimum System Requirements ..... 12

Stacking the Utrack ..... 13

Specifications ..... 14

Services ..... 15

*Utrack*

## Introduction

Thank you for purchasing the ICON Utrack Digital Audio Interface.

In these pages, you'll find a detailed description of all Utrack features, a guided tour through its front and rear panels, step-by-step instructions for its setup and use, and full specifications.

You'll also find a warranty card in this package. Please don't forget to fill it out and mail it.

Those registering products in this way will obtain easy access to online technical support and will be sent updated information about this and other ICON products in the future. As with most electronic devices, we strongly recommend you retain the original packaging. In the unlikely event the product must be returned for servicing, the original packaging (or reasonable equivalent) is required.

With proper care and adequate air circulation, your Utrack will operate without any trouble for many years. We recommend that you record your serial number in the space provided below for future reference.

Please write your serial number here for future reference:

Purchased at:

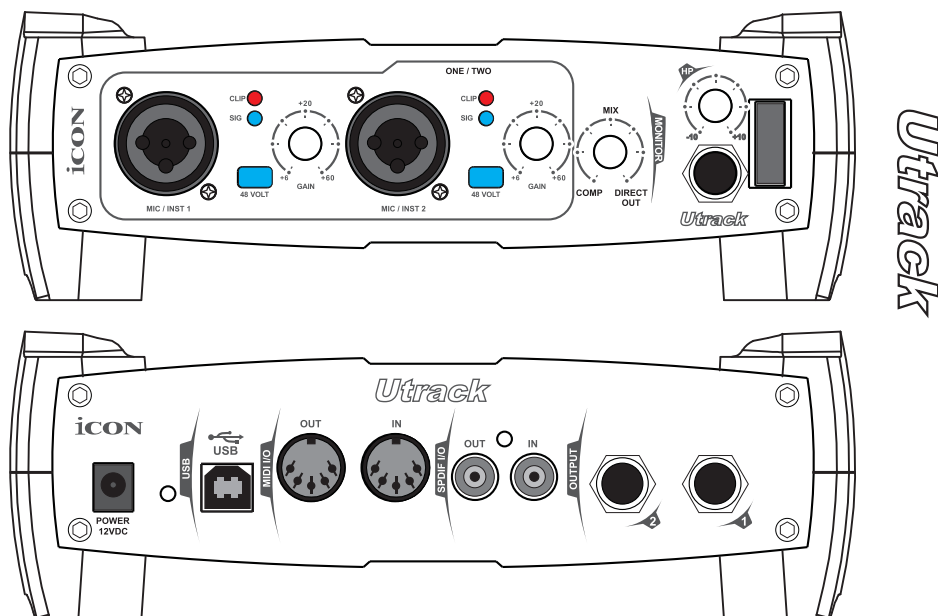
Date of purchase:

## What's in the package?

- Utrack Mobile Recording Interface
- Users' Manual
- Driver software CD
- USB cable
- 12VDC Power Supply



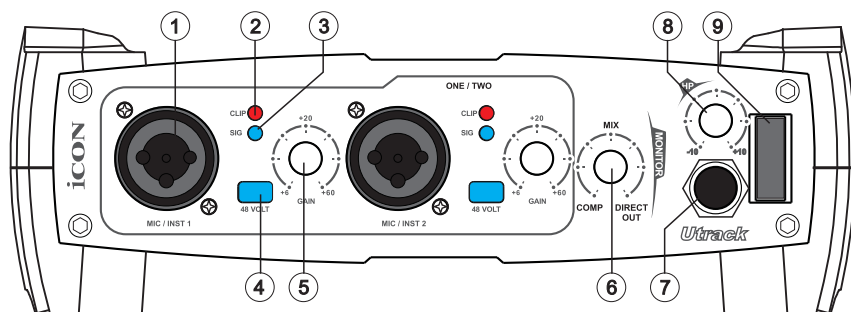
## Features



The ICON Utrack mobile interface audio input and output module offers USB connectivity. Main features include:

- 2 x 2 analog balanced I/O
- Dual microphone/instrument preamps with gain controls, LED metering, phantom power and input gain
- Two analog outputs on 1/4" TRS jacks
- S/PDIF I/O on RCA coaxial connectors
- Supports sampling rates from 44.1Hz to 192KHz
- Headphone output with assignable source and individual volume control
- Hardware Direct / PC Monitoring Adjustment knob
- Supports Direct Sound, WDM, ASIO and GIGA studio
- Full duplex, simultaneous record/playback
- Rugged aluminum construction

## Front Panel Layout



### ① MIC/INST INPUTS

Unbalanced Instrument and MIC level inputs. These hybrid connectors will accept a standard three-pin XLR plug or a 1/4" TS connector.

### ② CLIP LED

When lit, this LED indicates clipping input level at the associated MIC/INST input. The LED will illuminate when the signal is 3dB below the clipping point.

### ③ SIGNAL LED

When lit, this LED indicates the presence of an audio signal at the associated MIC/INST input.

### ④ 48V PHANTOM POWER SWITCH

When this switch is in the IN position, +48V phantom power is supplied to the XLR input. This phantom power circuit is suitable for most condenser microphones.

### ⑤ INPUT GAIN LEVEL CONTROL

This potentiometer controls the input level of its associated analog MIC/Instrument/Line input.

### ⑥ HARDWARE / PC MONITORING CONTROL

Hardware direct monitoring ( Clockwise - "Direct Out" ) eliminates the latency or delay inherent in even the best internal circuitry while listening to your input and existing tracks. You can also listen to your input complete with effects (Counter-Clockwise - "COMP") while recording by using extremely the low-latency ASIO monitoring

### ⑦ HEADPHONE OUTPUT

The output jack accepts a standard 1/4" stereo TRS headphone connector with individual level regulated by the HEADPHONE LEVEL CONTROLS. The default source selection for the headphone output is identical to line outputs 1/2.

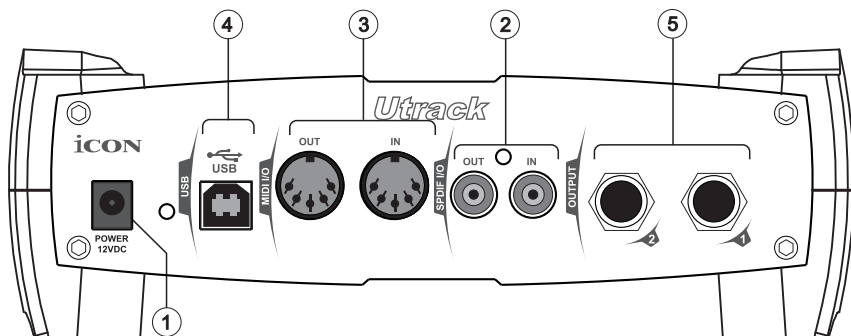
### ⑧ HEADPHONE LEVEL CONTROL

The potentiometers controls the output level of the headphone output.

### ⑨ POWER SWITCH

This switch controls the overall power to the unit.

## Rear Panel Layout



Utrack

### ① POWER SUPPLY CONNECTOR

Connect the 12VDC power supply to this jack using an AC adaptor provided.

### ② S/PDIF COAXIAL IN AND OUT CONNECTORS

S/PDIF digital input and output on coaxial RCA connectors. The digital input is selected via the Utrack's control panel, while the digital output will be sent to the coaxial .

### ③ MIDI IN AND MIDI OUT CONNECTORS

MIDI input and output on standard 5-pin DIN connectors.

### ④ USB CONNECTOR

Connect to your computer's USB port with the provided USB cable.

### ⑤ LINE OUTPUTS 1-2

These are balanced analog outputs on standard 1/4" TS connectors at +4dB line level. These outputs will support standard stereo, as well as 2 mono.

# Driver Installation

Please follow the below procedures step-by-step to install your Utrack and its driver.

## ① Turn on your computer

**Note: Do not connect the Utrack to your computer yet**

## ② Insert Driver CD to your CD-Rom

After you have insert the provided Driver CD into your CD-Rom, a Installation screen should appear as Diagram 1, then click "Driver Installation"

**Note: If the Installation screen not appear automatically. Go to the CD folder and double click "Setup"**

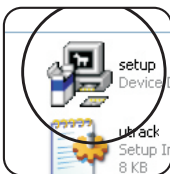


Diagram 1

## ③ Installation Wizard appear

Choose "Next" when you see the Welcome Screen as Diagram 2

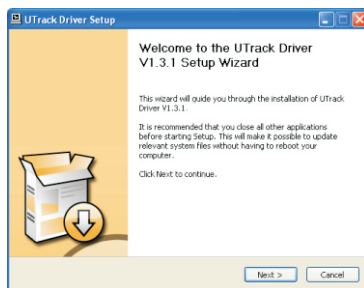


Diagram 2

## ④ Driver Setup

Choose the loaction of the driver and click "Next" as Diagram 3

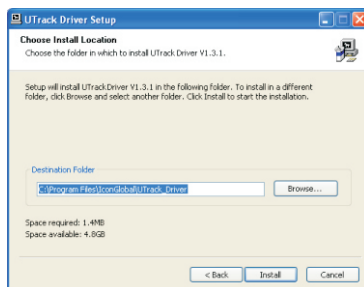


Diagram 3

## ⑤ Software Installation Window

A window as illustrated as Diagram 4 would appear. Choose "Continue Anyway"

**Note: Although this message appear. Utrack's driver is fully tested and supporting Window XP and Vista**

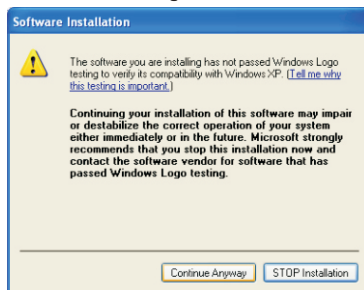


Diagram 4

## Driver Installation (Continues)

### ⑥ Installation Start

Driver (ASIO2.0) will automatically install and this may take some time, please be patient and wait for the installation set up completed as shown on Diagram5. Then click "Next".

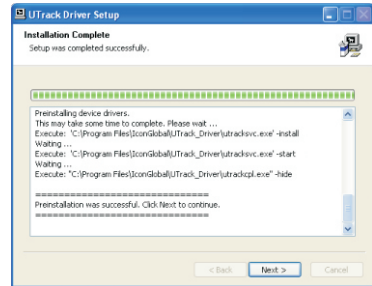


Diagram 5

### ⑦ Connect your Utrack

Now, connect the Utrack to your computer's USB port and turn on its power switch and click "Finish".

**Notes: Utrack only support USB 2.0. Your computer must have an USB2.0 port.**

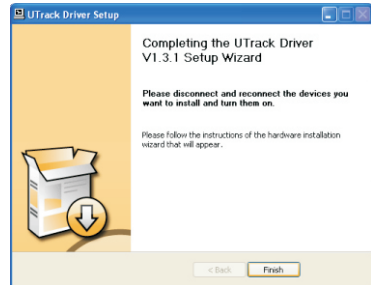


Diagram 6

### ⑧ Found New Hardware Wizard

New hardware (Utrack) should be found and click "Next"

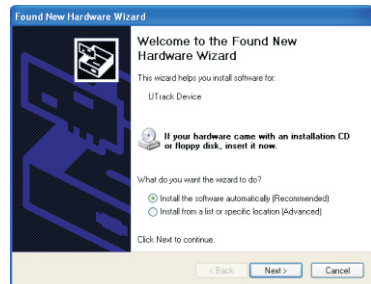


Diagram 7

### ⑨ Found New Hardware Completed

Utrack Device is found and appear in the window. Click "Finish"

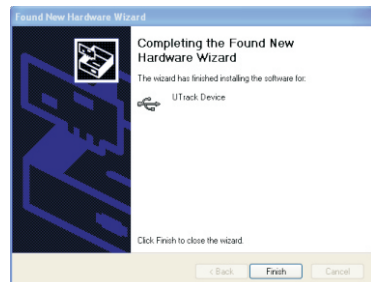


Diagram 8

Utrack

## Driver Installation (Continues)

- ⑩ **Utrack WDM Audio Driver**  
WDM driver installation window appear, click "Next"

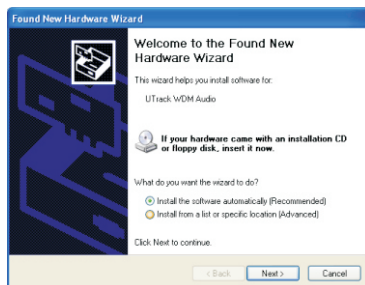


Diagram 9

- ⑪ **Software Installation Window**  
A window as illustrated as Diagram 4 would appear. Choose "Continue Anyway"

**Note:** Although this message appear. Utrack's driver is fully tested and supporting Window XP and Vista

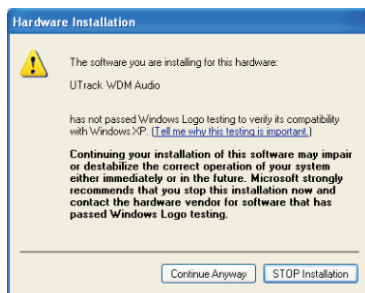


Diagram 10

- ⑩ **Driver Installation completed**  
Utrack's WDM driver installation has completed. Click "Finish"

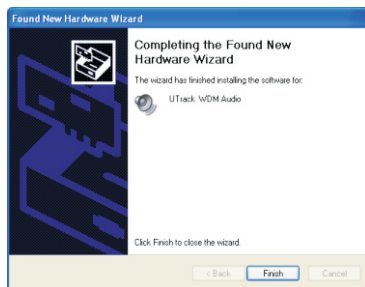


Diagram 11

- ⑩ **Launch the Utrack Control Panel**  
You may click the Utrack logo on the system tray to launch the Utrack Control Panel (Page 8).



Diagram 12

**Note:** For the latest driver updates please check [www.icon-global.com](http://www.icon-global.com)

# Control Panel

## Sample rate settings

Select your desired sampling rate from 44.1KHz to 192KHz at the pull down window as shown on Diagram 1. Click "Apply" after selection been made to set the value.

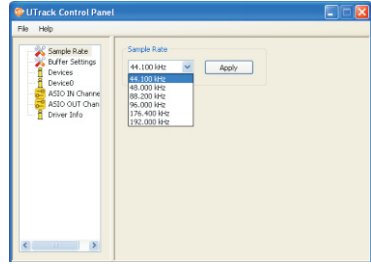


Diagram 1

## Buffer Size settings

You may select the buffer size for "Streaming", "ASIO" and "WDM". Click "Apply" after you have made the selections.

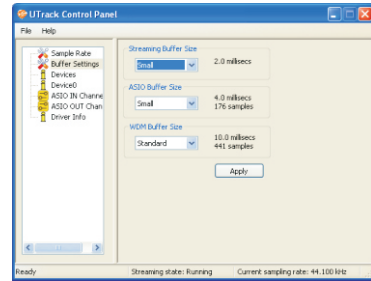


Diagram 2

## Device settings

Showing the serial no. & Product ID of your Utrack device. If it doesn't, it means your Utrack is not properly installed. Please go through the Driver Installation process again (Page 5).

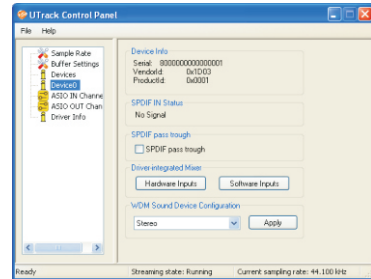


Diagram 3

## Hardware Inputs Mixer

Click this button to launch the "Hardware Inputs Mixer" (Page 9)

## Software Inputs Mixer

Click this button to launch the "Software Inputs Mixer" (Page 10)

## S/PDIF Status and Pass Through

Showing the S/PDIF device signal status.

## S/PDIF Pass Through

"Tick" the box if you wanted S/PDIF signal pass through

## WDM Sound Device Configuration

As Utrack is a 2x2 I/O interface, you should select "Stereo" for this setting.

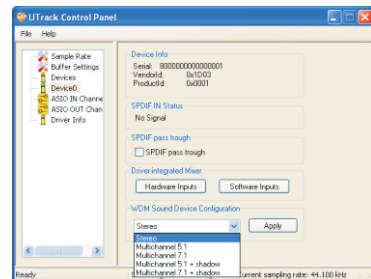
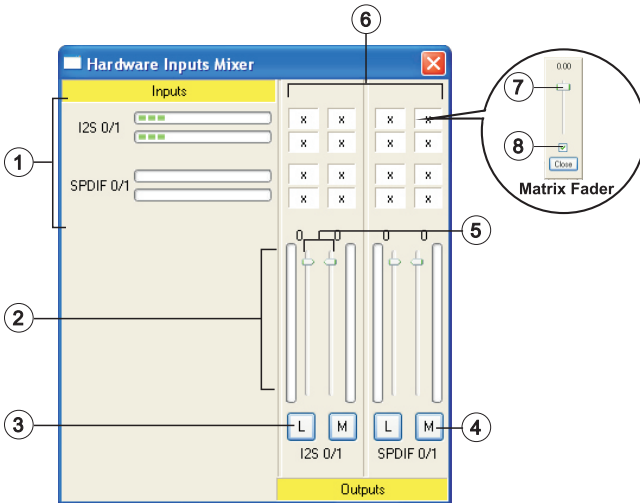


Diagram 4

## Control Panel (Continues)

### Hardware Inputs Mixer

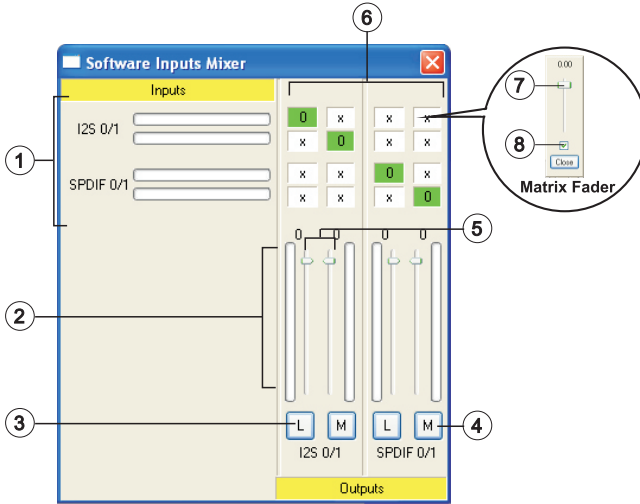


- ① **Hardware Inputs Ch1,2 & S/PDIF Level Metering**  
Showing the input level for the hardware input channel.
- ② **Hardware Outputs Ch1,2 & S/PDIF Level Metering**  
Showing the output level for the hardware output channel.
- ③ **Link Switch**  
Switch to adjust both Channels simultaneously
- ④ **Mute Switch**  
Switch to Mute the corresponding channel
- ⑤ **Gain Control**  
Adjust the gain for the corresponding channel
- ⑥ **Inputs & Outputs Matrix switches**  
Switch to turn On/Off of the corresponding hardware input channel route to the corresponding hardware output channel
- ⑦ **Inputs & Outputs Matrix Mixer**  
"Tick" the box to activate the mixer
- ⑧ **Inputs & Outputs Matrix Mixer Gain Control**  
Adjust the gain for the corresponding hardware channel. After finish the adjustment, click "Close" to close the window



## Control Panel *(Continues)*

### Software Inputs Mixer



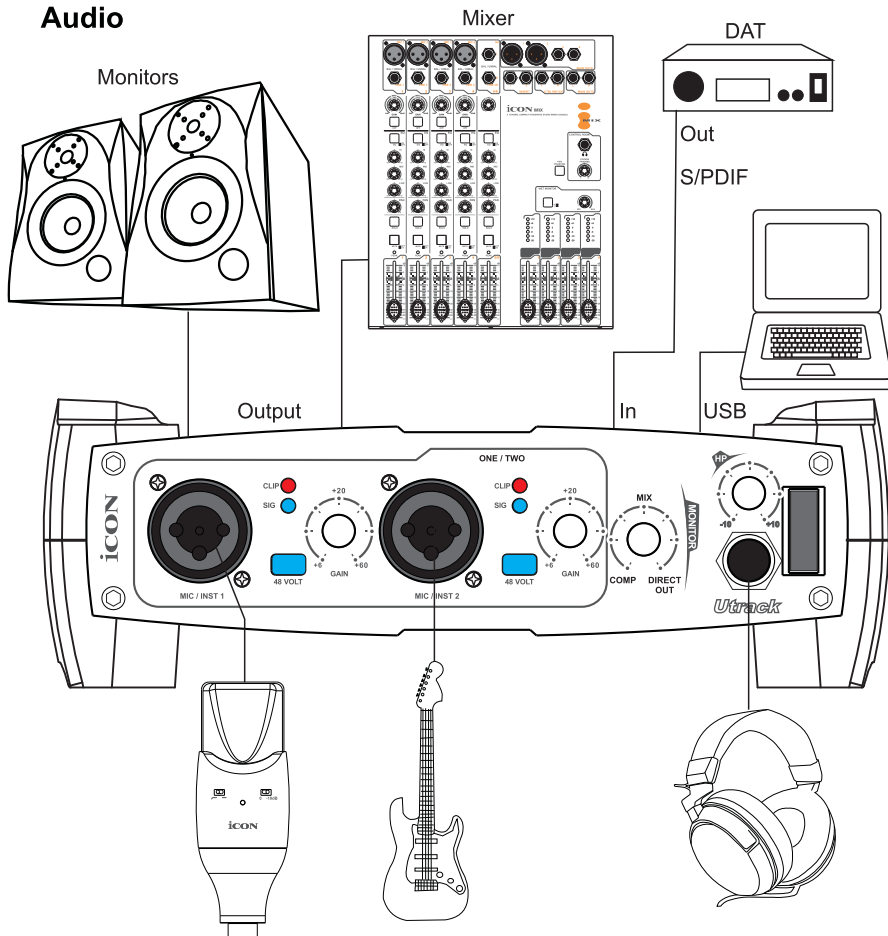
Utrack

- ① **Software Inputs Ch1,2 & S/PDIF Level Metering**  
Showing the input level for the software input channel.
- ② **Software Outputs Ch1,2 & S/PDIF Level Metering**  
Showing the output level for the software output channel.
- ③ **Link Switch**  
Switch to adjust both Channels simultaneously
- ④ **Mute Switch**  
Switch to Mute the corresponding channel
- ⑤ **Gain Control**  
Adjust the gain for the corresponding software channel
- ⑥ **Inputs & Outputs Matrix switches**  
Switch to turn On/Off of the corresponding software input channel route to the corresponding software output channel
- ⑦ **Inputs & Outputs Matrix Mixer**  
"Tick" the box to activate the mixer
- ⑧ **Inputs & Outputs Matrix Mixer Gain Control**  
Adjust the gain for the corresponding software channel. After finish the adjustment, click "Close" to close the window

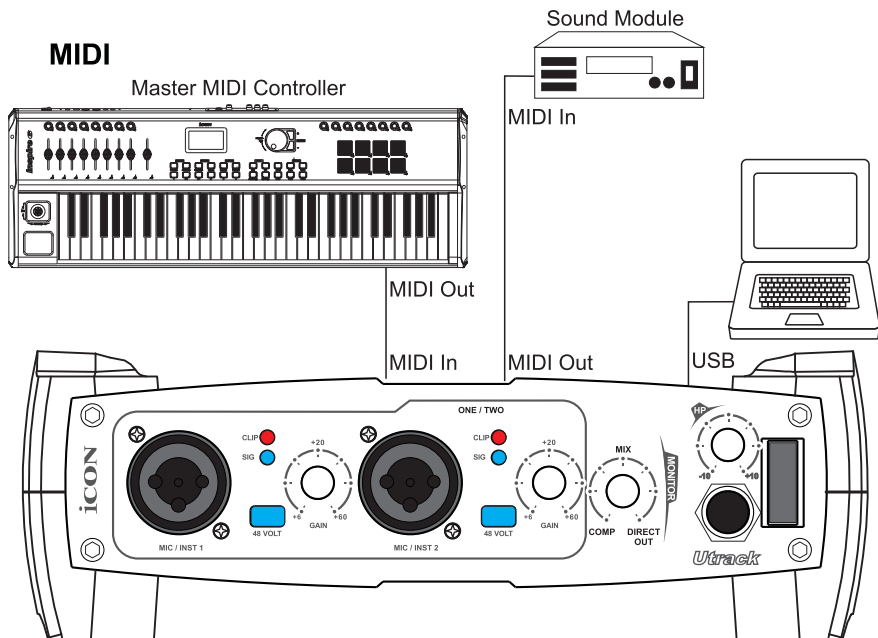
## Hardware Connections

- Connect the Utrack's outputs to your amplifier, powered monitors or surround system. Two-channel stereo operation, the default outputs are channels 1 and 2.
- If you are monitoring through headphones, connect your headphones to the Utrack's headphone output.
- Connect your microphones, instruments or other line level analog sources to the Utrack's analog inputs.
- Connect your S/PDIF digital devices to the coaxial digital I/O.

### Audio



## Hardware Connections (Continues)



Utrack

## Minimum System Requirements

**Important:** The Utrack is supported under Windows XP, Windows 2000 & Window Vista. The Utrack is not supported under Windows 98 or Windows Me. In the case of Windows 2000, you must be running SP3 or later. For Windows XP, you must be running SP1 or later. Visit the Windows update web pages to make sure you have the most current updates and fixes supplied by Microsoft.

On the Mac, the Utrack is supported under MacOS 9.2 or later, and Mac OSX version 10.1.5 or later. Earlier versions of Mac operating systems are not supported.

### Windows OP:

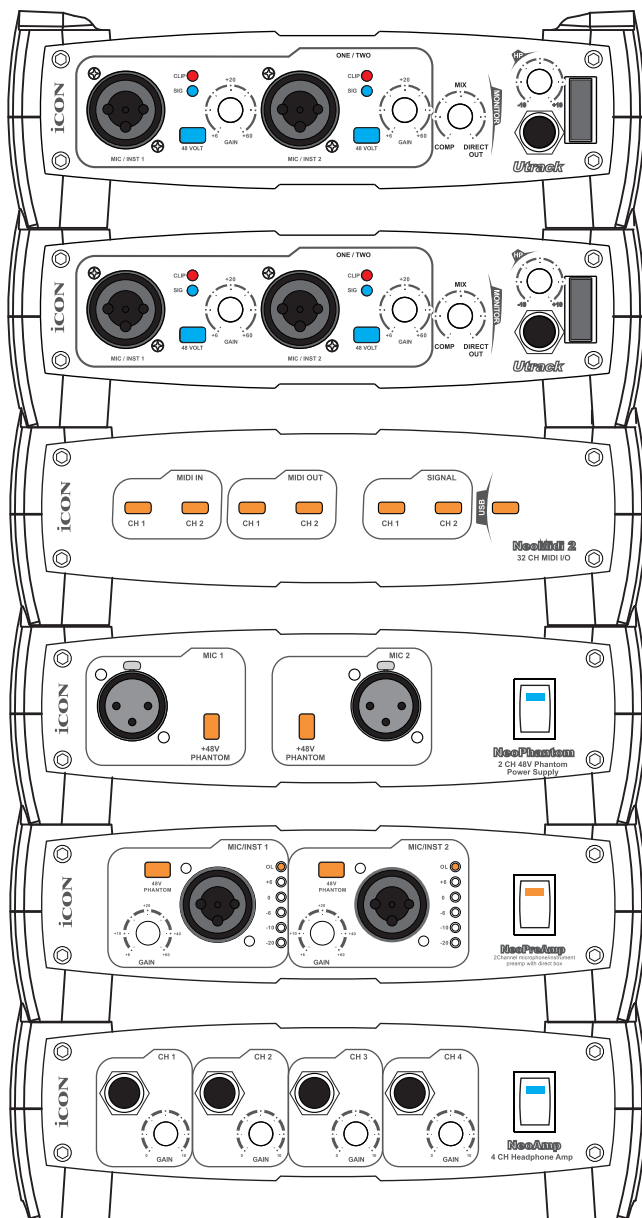
Pentium 3 500 MHz or higher  
128 MB RAM  
DirectX 8.1 or higher  
Windows XP (SP1), Windows 2000 (SP3)  
or Window Vista

### Mac OP:

Macintosh G3 500 MHz or higher  
128 MB RAM (OS 9), 256 MB RAM (OSX)  
OS 9.2 or later, or OS 10.1.5 or later

## Stacking the Utrack

You can stack one Utrack or any other ICON Neo Series gears on top of each other by simply lining up the bumpers.



**Specifications** *(Measured at 48KHz Sample Rate)*

Utrack

**Mic/Inst Inputs 1/2 (Balanced; at Minimum Gain):**

|                        |  |
|------------------------|--|
| Frequency Response:    | 22Hz to 22kHz (+/-0.1dB)                                   |
| Dynamic Range:         | 100dB, A-weighted  |
| Signal-to-Noise Ratio: | -100dB, A-weighted   |
| THD+N:                 | <0.0061% (-90dB)   |
| Crosstalk:             | -100dB @ 1kHz  |
| Maximum Input level:   | -3.8dBu, typical   |
| Input Impedance:       | Inst in: 500K Ohms, typical;<br>Mic in: 1.8K Ohms, typical |
| Adjustable Gain:       | > 50dB   |
| Total Gain Range:      | +54dB  |

**Line Outputs 1-2 (TRS):**

|                        |  |
|------------------------|--|
| Frequency Response:    | 22Hz 22kHz (+/-0.1dB)  |
| Dynamic Range:         | 102dB, A-weighted  |
| Signal-to-Noise Ratio: | -102dB, A-weighted   |
| THD+N:                 | <0.003% (-90 dB)   |
| Crosstalk:             | -100dB @ 1kHz  |
| Nominal Output Level:  | Balanced: +4dBu<br>Unbalanced: -10dBV                        |
| Maximum Output Level:  | Balanced: +10.2dBu, typical;<br>Unbalanced: +2.0dBV, typical |
| Output Impedance:      | 150 Ohm  |
| Load Impedance:        | 600 Ohm minimum  |

**Headphone Output 1 (at Maximum Volume; Into 100 Ohm load):**

|                                 |                        |
|---------------------------------|------------------------|
| Frequency Response:             | 22Hz to 22kHz (+/-1dB) |
| Power into Ohms:                | 90 mW into 100 Ohms    |
| THD+N:                          | <0.06% (-66dB)         |
| Signal-to-Noise Ratio:          | -90dB, A-weighted      |
| Max Output Level into 100 Ohms: | +2.0dBV, typical       |
| Output Impedance:               | 75 Ohm                 |
| Load Impedance:                 | 32 to 600 Ohms         |

## Services

**If your Utrack needs servicing, follow these instructions.**

1. Ensure the problem is not related to operation error or external system devices.
2. Pack the unit in its original packaging including end card and box. This is very important. If you have lost the packaging, please make sure you have packed the unit properly. ICON is not responsible for any damage that occurs due to non-factory packing.
3. Contact your ICON dealer or if none is available, contact the nearest ICON distributor or regional office to obtain a return authorization. If applicable, shipping instructions will be provided by the dealer or from ICON.

Refer to [www.icon-global.com](http://www.icon-global.com) for a complete list of current ICON distribution polcations.

### **U.S. OFFICE:**

ICON Digital Corporation.  
2222 Pleasant View Road,  
Suite #1 Middleton,  
WI 53562

Tel: 608-829-3450      Fax: 608-829-1972  
[infous@icon-global.com](mailto:infous@icon-global.com)

### **ASIA OFFICE:**

ICON International Digital Limited  
Suite Nos. 7-10,  
8th Floor, Sunley Centre,  
No.9 Wing Yin Street,  
Kwai Chun. N.T.

Hong Kong  
Tel: 852-2398-2286      Fax: 852-2789-3947  
[infoasia@icon-global.com](mailto:infoasia@icon-global.com)

For additional update information please visit our website at:  
**[www.icon-global.com](http://www.icon-global.com)**





**i**CON®  
[www.icon-global.com](http://www.icon-global.com)  
[info@icon-global.com](mailto:info@icon-global.com)

